



TÖÖINSPEKTSIOON



European Union
European Social Fund



Investing
in your future

Labour Inspectorate of Estonia Moves to the Internet

Madleen Mäe

Project Manager of Working Life Information System

1.12.2021

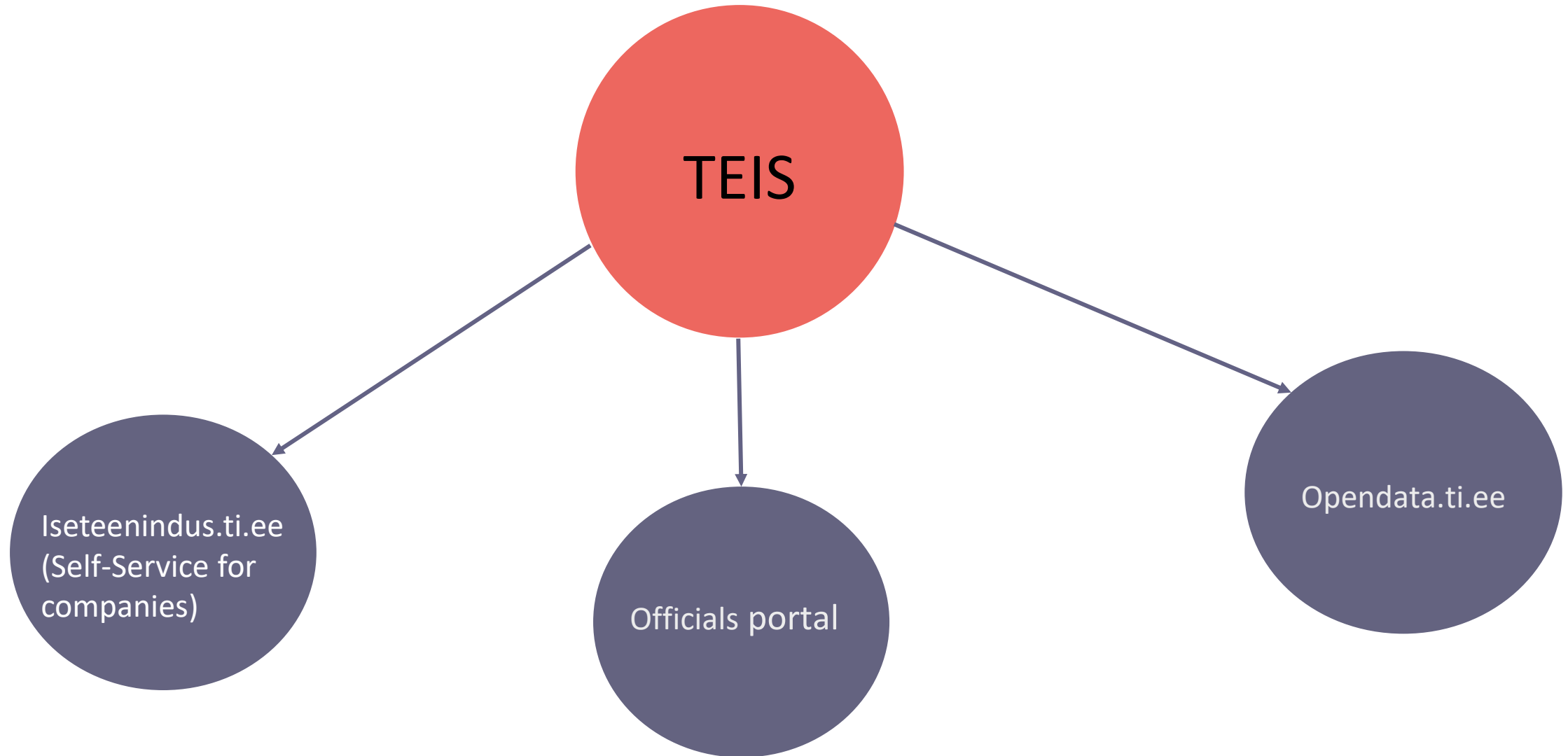
Today's topics

- What is Working Life Information System (TEIS) from a birds eye view?
- A Need for Change – why and how?
- Existing Services
 - Managing working environment in the Self-Service
 - Working environment representatives
 - Creating and/or submitting risk assessment and action plan
 - (Contact Free) Supervision

Ca 10 million euros



Working Life Information System (TEIS)



A Need for a Change – why?

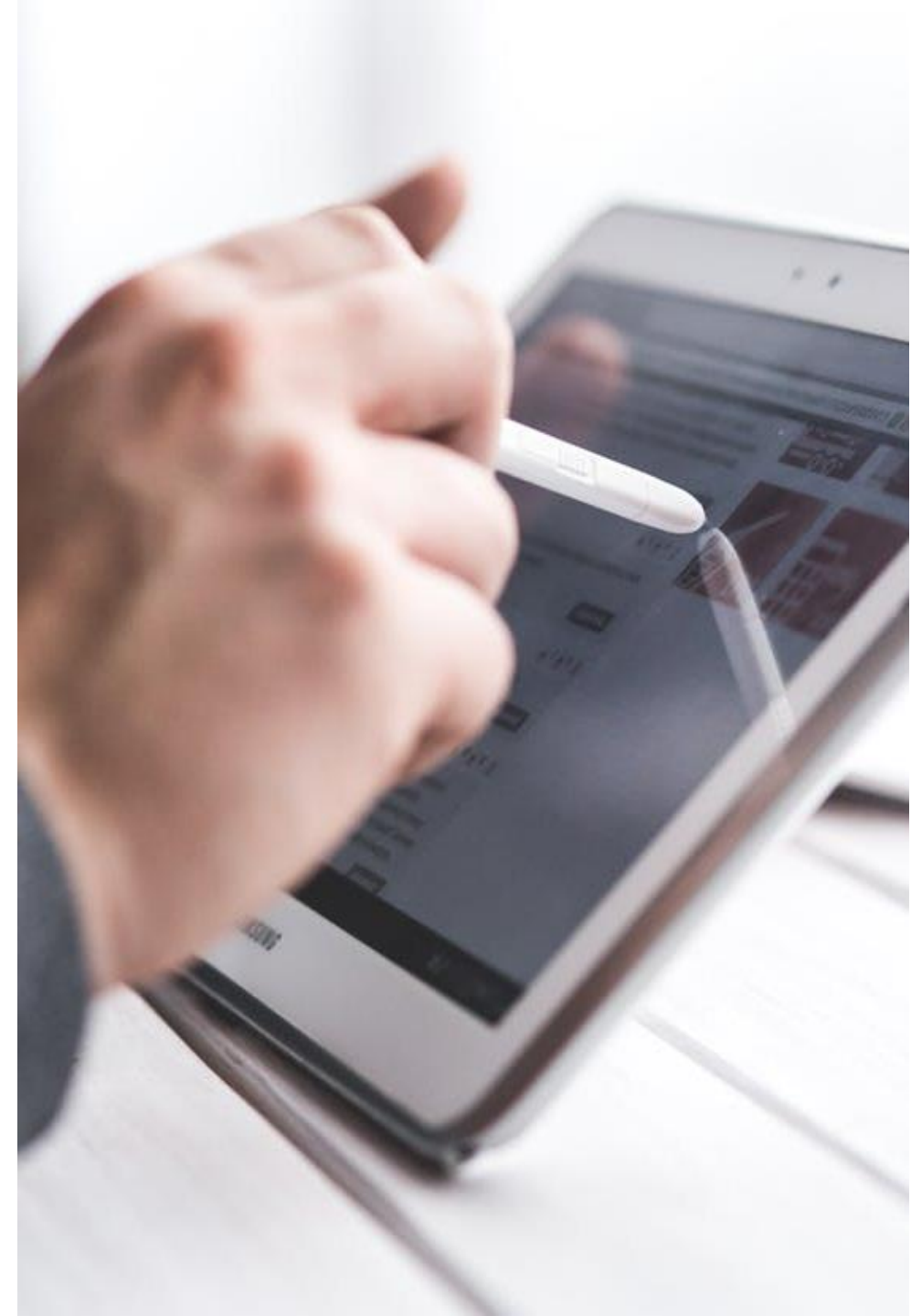
To be more efficient

- We need to reach out for more companies
- Better and updated data
- More focused informing, consulting and supervision
- Existing IT-systems outdated (from 2003) – further development impractical
- Need for automation (to reduce administrative burden)
- Exists an expectation towards possibility to communicate with the State through e-service

A Need for a Change – how?

Principles of development

- For the companies - one-off submission of identical data to the state
- Single Window principle for work-environment related topics
- It is all about exchanging information not documents
- Faster and more secure communication (e-mail- > self-service)
- Agile development – piece by piece, lesser mistakes
- MVP - constantly improving based on the user experience
- Self-explaining environment for all the users




Data About Companies

Business Registry

- company ID
- field of activities
- contacts
- location

We use existing data




Company has to give data for the state only once
We don't ask it again, we get it from other registries.

Data About Employees

Employment Registry

- employee ID
- contract type
- profession
- location of work

We use existing data



Company has to give data for the state only once
We don't ask it again, we get it from other registries.

Improvements for Companies

- Easy and self-explaining interface
- Easy to communicate with us via self-service
- Personal dashboard (red/green feedback)
- Risk rating
- New tools for complying with the law
- Less data input (X-road connection)
- Faster and paper-free inspection

Improvements for Labour Inspectorate

- Correct and updated information
 - companies (business registry)
 - employees (employment registry, population registry)
 - situation at the company (self-service)
- Easier inspection activities
- Faster and more secure communication (e-mail-> self-service)
- Structured machine-readable data
- Automation possibilities
- Risk calculation (live in the future) - >helps to focus more on companies that need more attention

Managing working environment in the self-service

- Dashboard
- Representatives
- Supervision
- Company settings
- Risk assessment

Working environment representatives

Filter by address or name



 Töökeskkonnaspetsialist

Details not provided.

+ Add a person

 History

 Töökeskkonnavolinik

It is not required to assign a person to this role, but it is possible

+ Add a person

 History

Creating and/or submitting a risk assessment

Representatives

Supervision

Company settings

Risk assessment

Action plan

Risk assessment

[Upload an existing risk assessment](#) [+ New risk assessment](#)

Valid

| ◇ Title | ▽ Date of submission | |
|---|----------------------|-----------------------------|
| TEST: Riskianalüüs | 28.04.2021 | ... Actions |
| TEST 02.03.2021 TI'le esitatud riskianalüüs | 02.03.2021 | ... Actions |
| Riskianalüüs veebruar 2021 | 26.02.2021 | ... Actions |

Incomplete

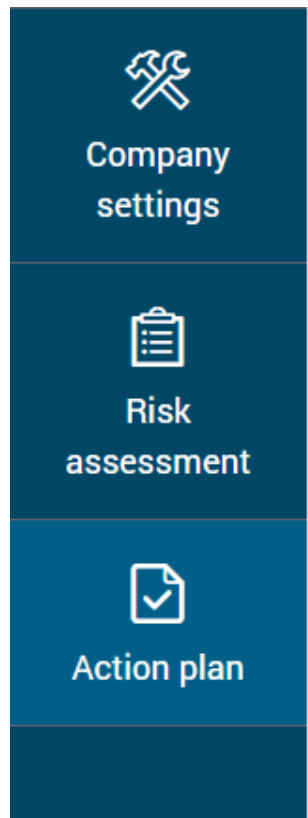
| ◇ Title | ▽ Last edited | |
|-----------------------------|---------------|---|
| Riskianalüüs september 2021 | 24.09.2021 | Continue 🗑️ |

The risk assessment digital tool:

- Helps to assess most likely hazards in the specific field of activity and gives possible measures to tackle it – easier to assess the working environment. No need for external specialist.
- Flexible – hazards and measures can be added, if they don't appear in the specific business type module
- Covid 19 as a hazard category added – easier to plan the necessary activities
- By uploading/submitting the risk assessment in the self-service environment, the organisation has fulfilled its legal obligation to submit the analysis to the LI.
- The LI has taken over the obligation to maintain the analysis.

Seperate view for all the planned actions

- Activities that come from risk assessment
- Activities can be added on an ongoing basis -> a tool for day-to-day management of the working environment



Action plan

Actions

Filters [+ Add action](#)

| Description of action | Deadline | Responsible person | Status | |
|--|--------------|--------------------|--------|-----------|
| Resolve as soon as possible Korraldatud on õhutemperatuuri mõõtmised. Source:: Test_Riskianalüüs aprill 2021_Madleen | 30.09.2021 | MADLEEN MÄE | To do | ⋮ Actions |
| test Source:: Sisekontroll source: internal control | ! 18.08.2021 | MADLEEN MÄE | To do | ⋮ Actions |
| Veekeetjat kasutatakse ja hooldatakse kasutusjuhendi järgi. Source:: TEST: Riskianalüüs | ! 09.05.2021 | Tiiu Luik | To do | |

1 - 3 / 3 ← 1 → Display at once 50 ▾

✓ Mark as completed

✎ Edit

🗑 Delete

(Digital) Supervision

-  Representatives
-  Supervision
-  Company settings
-  Risk assessment
-  Action plan

Proceedings 3-1/21/111

Menetluses

General data

Documents

Inspections

Deficiencies

Actions

Calendar

General data

 Notice of initiating proceedings

Number of the proceedings **3-1/21/111**

Start date **18.11.2021**

End date **None**

Proceedings official **Madleen Mäe**

Persons associated with the inspections

 Chat

No. 3-1/21/111-2 Associated persons of the Labour Inspectorate Madleen Mäe

[General data](#)[Documents](#)[Inspections](#)[Deficiencies](#)[Actions](#)[Calendar](#)

Documents

[+ Add files](#)

Ehitus: tellingute demonteerimisplaan (0)

[+ Add files](#)

Ehitus: tellingute vastuvõtuakt (0)

[+ Add files](#)

Kasutatavate töövahendite (masinate, seadmete jne) ja tehtavate tööde ohutusjuhendid (0)

[+ Add files](#)[Chat](#)

+ Uus kontroll



Planeeritud läbiviimise
kuupäev
Kohustuslik

24.11.2021



Planeeritud läbiviimise
kellaeg
Kohustuslik

12:00



[Lisa tegelik aeg](#)

Kontaktivaba kontroll

Läbiviimise koht

Mäealuse tn 2/3, Tallinn



Läbiviijad

Madleen Mäe



Juuresviibija



TÖÖINSPEKTSIOON

Thank you!

Madleen Mäe

madleen.mae@ti.ee